

## Reprocessing Flexible Endoscope Accessories Manual Cleaning and High Level Disinfection for the MAJ-2092

### WARNING



This workflow is a **SUMMARY** of the reprocessing steps necessary to properly reprocess your MAJ-2092. **Following disconnection and disassembly of the MAJ-2092 utilize the IFU for how to reprocess the MAJ-2092 and sealing accessories.**

### WARNING



Be sure to remove the sealing accessory before reprocessing. Otherwise, it may not be reprocessed properly. (Follow the IFU for reprocessing instructions for the sealing accessory)



MAJ-2092 (Luer-Split)

### Precleaning

1

Disconnect from the endoscope



2

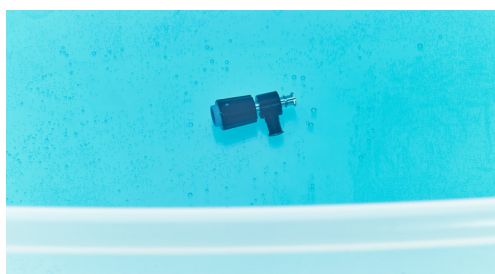
Completely immerse in detergent solution



### Manual Cleaning

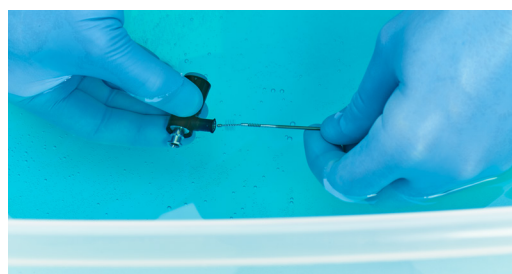
3

Completely immerse the Luer-Split (MAJ-2092) in detergent solution



4

Wipe and clean the external surfaces. Brush the internal surface of EVERY part of the Luer-Split



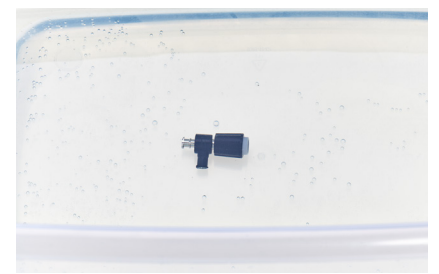
5

Flush the interiors, the openings, and the holes



6

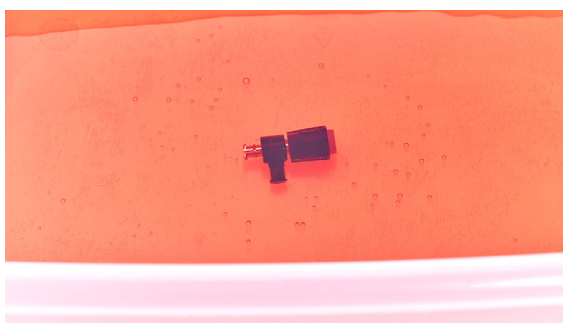
Thoroughly rinse



### Manual Disinfection

7

Completely immerse the Luer-Split in disinfectant solution



8

Fill the channel with disinfectant solution and flush the interiors



9

Cover the basin and allow the Luer-Split to soak



### Rinsing

10

Thoroughly rinse and flush the interiors, the opening, the holes and the irrigation port



### Drying

11

Immerse in Alcohol



12

Thoroughly dry



## Reprocessing Flexible Endoscope Accessories Manual Cleaning Prior to Sterilization for the MAJ-2092

### WARNING



This workflow is a **SUMMARY** of the reprocessing steps necessary to properly reprocess your MAJ-2092. **Following disconnection and disassembly of the MAJ-2092 utilize the IFU for how to reprocess the MAJ-2092 and sealing accessories.**

### WARNING



Be sure to remove the sealing accessory before reprocessing. Otherwise, it may not be reprocessed properly. (Follow the IFU for reprocessing instructions for the sealing accessory)



MAJ-2092 (Luer-Split)

### Precleaning

1

Disconnect from the endoscope



2

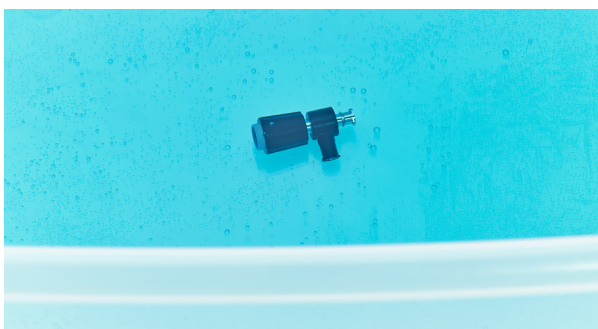
Completely immerse in detergent solution



### Manual Cleaning

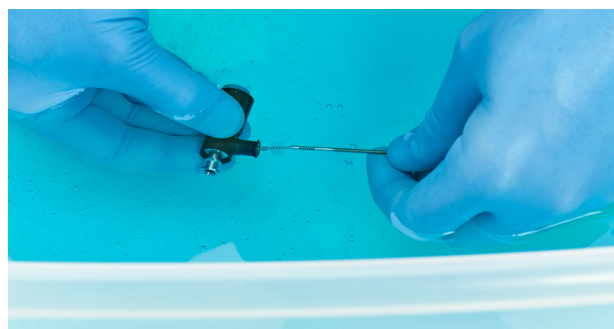
3

Completely immerse the Luer-Split (MAJ-2092) in detergent solution



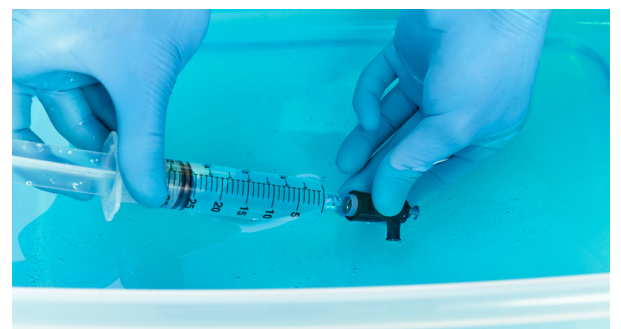
4

Wipe and clean the external surfaces. Brush the internal surface of EVERY part of the Luer-Split



5

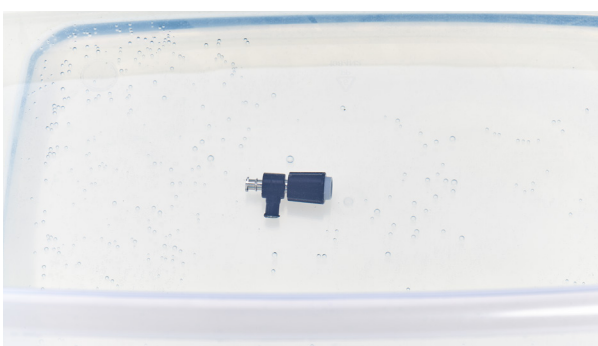
Flush the interiors, the openings, and the holes



### Rinsing

6

Thoroughly rinse



### Drying

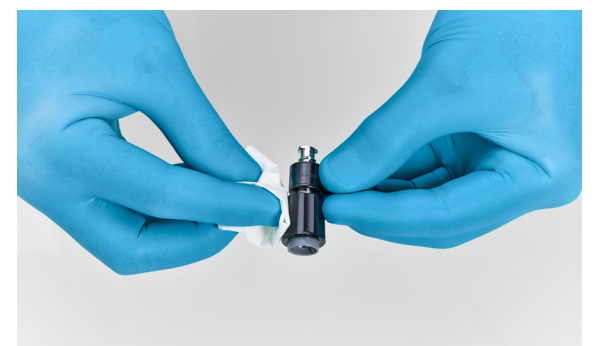
7

Immerse in Alcohol



8

Thoroughly dry



**Note: Prior to sterilization thoroughly dry the Luer-Split and seal in individual packaging appropriate for the sterilization method chosen.**