

OLYMPUS[®]

Your Vision, Our Future

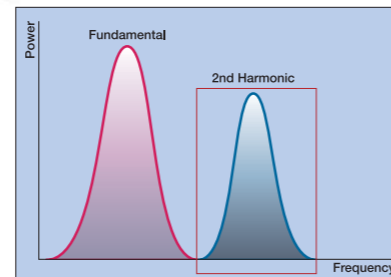
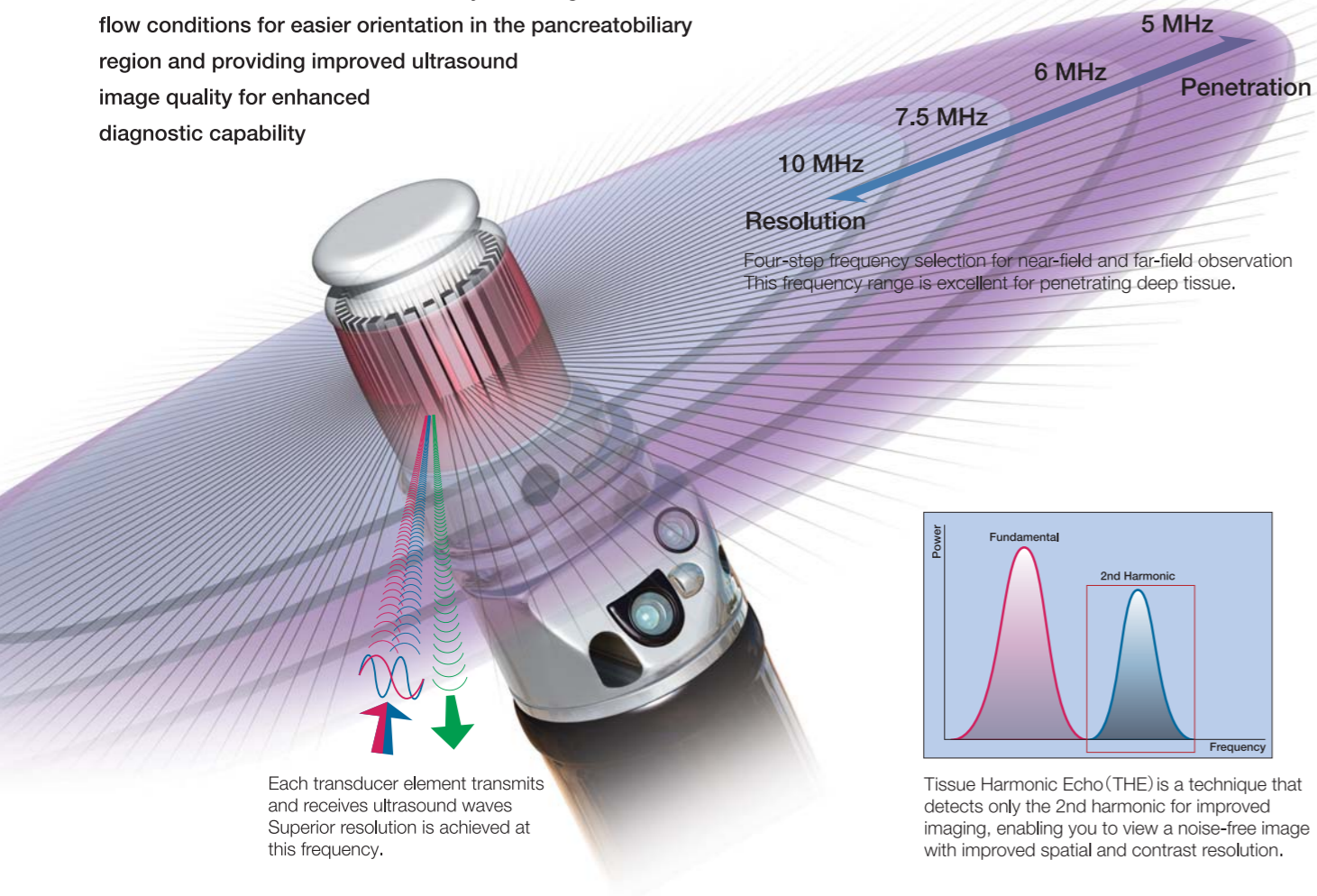
EVIS EUS

ULTRASONIC GASTROVIDEOSCOPE
GF-UE160-AL5



Superb Ultrasound Image Quality and Exceptional Scope Maneuverability

Expanding the potential of EUS, this breakthrough system combines exceptional scope capability and maneuverability with superb ultrasound image quality and advanced ultrasound functionality, enabling confirmation of blood flow conditions for easier orientation in the pancreatobiliary region and providing improved ultrasound image quality for enhanced diagnostic capability



Tissue Harmonic Echo (THE) is a technique that detects only the 2nd harmonic for improved imaging, enabling you to view a noise-free image with improved spatial and contrast resolution.

ULTRASONIC GASTROVIDEOSCOPE GF-UE160-AL5

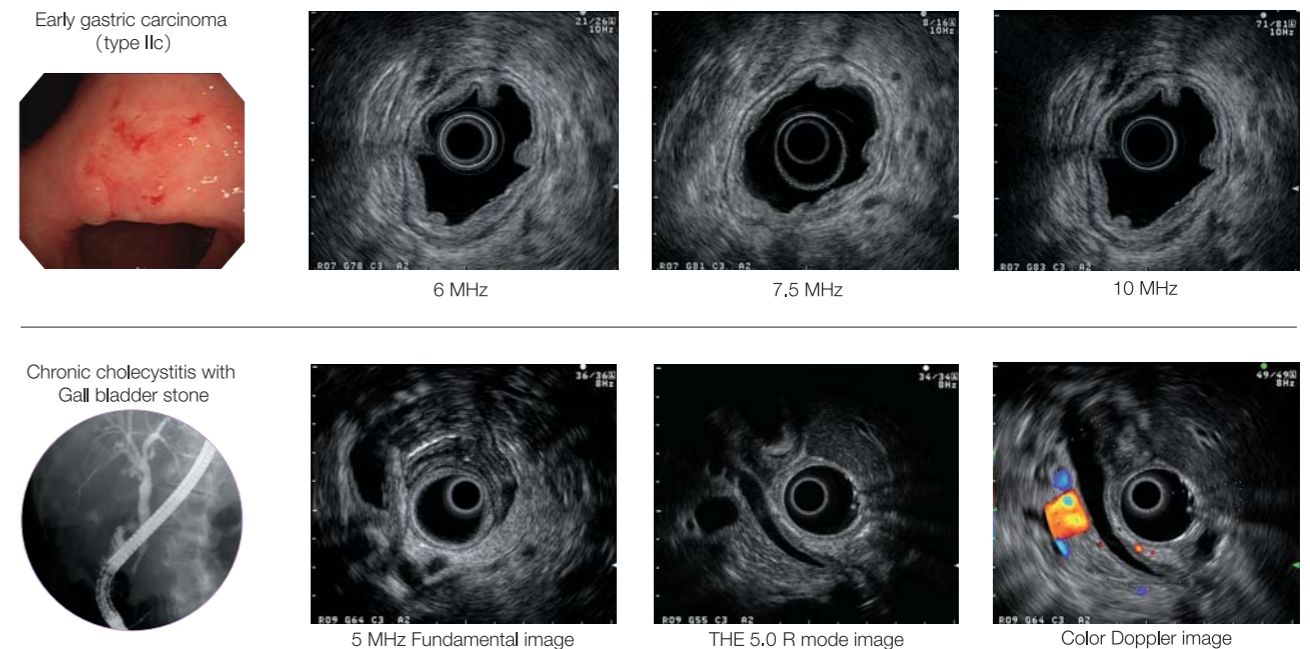
Unprecedented scope maneuverability and high-quality imaging capability with a convenient lens cleaning function

Features/Benefits

- Easier orientation in the pancreatobiliary region with 360° electronic radial scanning and image rotation capability
- High-quality ultrasound images with four selectable frequencies
- Superb scope maneuverability, made possible by a wide angulation range (130° up, 90° down/right/left), to facilitate the approach to the duodenal bulb
- Tissue Harmonic Echo (THE) for improved spatial and contrast resolution
- Color and Power Doppler for effective confirmation of blood flow
- Lens cleaning function to keep the endoscopic field of view clear at all times



Sample Imaging Results



ALOKA Diagnostic Ultrasound Systems

ProSound α10

Delivering premium imaging performance, superior functionality and proven reliability

ALOKA's ProSound technology is widely recognized for its ability to provide optimum ultrasound imaging performance, making it ideal for EUS. When combined with OLYMPUS' GF-UE160-AL5 endoscope, the result is a EUS platform that delivers accurate, comprehensive imaging. Using a variety of state-of-the-art technologies such as THE, ALOKA's ProSound system offers unparalleled views of internal structures.

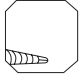
Features

- Preeminent Imaging Performance
- Tissue Harmonic Echo (THE)
- Quad-Frequency Imaging (Four-Step Multi-Frequency Imaging)
- Dual Dynamic Display (DDD)
- Storage & Networking
- DICOM Network



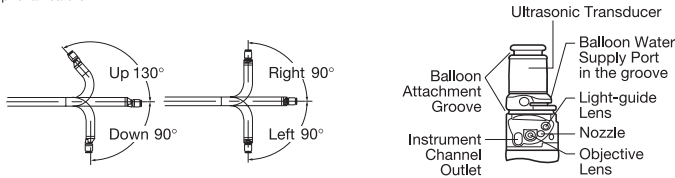
OLYMPUS GF TYPE UE160-AL5

Specifications

Endoscopic Functions	Optical System	Field of view	100°
		Direction of view	Forward oblique viewing 55°
		Depth of field	3 to 100 mm
	Insertion Tube	Distal end outer diameter	13.8 mm
		Insertion tube outer diameter	11.8 mm
		Working length	1250 mm
		Channel inner diameter	2.2 mm
	Instrument Channel	Minimum visible distance	3 mm
		Direction from which endo-therapy accessories enter and exit the endoscopic image	
	Bending Range	Angulation range	Up 130°, Down 90° Right 90°, Left 90°
Total Length	1555 mm		
Lens Cleaning Function	Available		
Ultrasonic Functions	Display Mode	B-mode, M-mode, D-mode, Flow mode, Power Flow mode	
	Scanning Method	Electronic radial array	
	Scanning Direction	Perpendicular to insertion direction	
	Frequency	5/6/7.5/10 MHz	
	Tissue Harmonic Echo *	3.75 S/3.75 P/5.0 R/5.0 H	
	Focusing Point	A maximum of four focusing points are available. (between F1 and F16)	
	Scanning Range	360°	
	Contacting Method	Balloon method Sterile de-aerated water immersion method	
	Image Rotation	Available	



* Optional feature



Specifications, design and accessories are subject to change without any notice or obligation on the part of the manufacturer.



OLYMPUS MEDICAL SYSTEMS CORP.
Shinjuku Monolith, 2-3-1 Nishi-Shinjuku, Shinjuku-ku, Tokyo 163-0914, Japan

For a complete listing of sales and distribution locations visit:
www.olympus.com