

OLYMPUS[®]

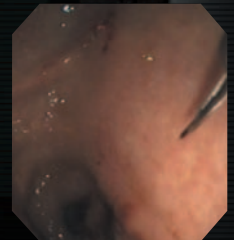
Your Vision, Our Future

EUS
ENDOSCOPIC ULTRASOUND SYSTEM

ULTRASONIC GASTROVIDEOSCOPE
OLYMPUS **GF** TYPE **UC140P-AL5**
OLYMPUS **GF** TYPE **UCT140-AL5**



**Precision-Guided
Fine Needle Aspiration**



**Olympus' Renown Endoscopic Optics
Aloka's Superior Ultrasound Imaging
Versatile EUS Interventional Capability**

ALOKA DIAGNOSTIC ULTRASOUND SYSTEM
ProSound α5



Olympus Endoscopic Ultrasound System Allows You to Take Full Advantage of EUS-Guided FNA — an Established Technique for Tissue Diagnosis in and Around the Digestive Tract



OLYMPUS **GF** TYPE **UC140P-AL5**
An Outstanding Scope with Advanced Insertion Capability and High Quality Imaging

OLYMPUS **GF** TYPE **UCT140-AL5**
Greater Therapeutic Capability with Large 3.7 mm Diameter Channel

Features

High-resolution CCD delivers crystal clear, life-like video endoscopic images and enables excellent visualization of the target area and the FNA needle as it exits the endoscope.

Electronic Convex scanning facilitates the use of advanced imaging techniques such as Color Doppler and Power Doppler, making it easier to interpret blood flow conditions and offering added performance with electronically adjustable focusing and multi-frequency imaging capability.

The tight radius of the convex array transducer has allowed a significant improvement in insertion capability.

Wide 180° scanning angle ensures comprehensive imaging of all structures surrounding the region of interest.

Olympus' originally patented forceps' elevator design allows fine-tuning of needle placement once the scope position is fixed, improving needle placement during FNA.

Matching of slim 11.8 mm insertion tube diameter and standard 2.8 mm channel diameter of the GF-UC140P-AL5 offers greater ease of use.

The exceptionally large 3.7 mm diameter channel of the GF-UCT140-AL5 enables more advanced FNA techniques to be performed using aspiration needles larger than 22 G.



Endoscopic Ultrasound-guided fine needle aspiration is quickly becoming one of today's most effective diagnostic techniques. Olympus, the world's leading manufacturer of endoscopic products, has joined forces with an ultrasound pioneer, Aloka, to develop a system that maximizes the potential of this popular new technique. The result is an EUS-guided FNA system that combines Olympus' excellent endoscopic video image quality with Aloka's industry leading ultrasound imaging. With its advanced performance and comprehensive, state-of-the-art capabilities, this new system provides the support you need to explore the vast potential of EUS-guided FNA.



ALOKA Diagnostic Ultrasound System ProSound α 5/SSD-5000

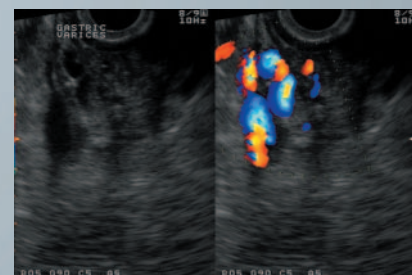
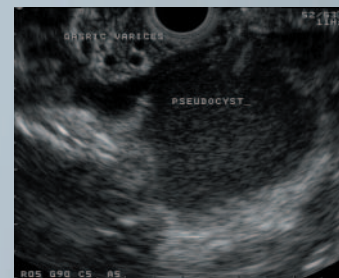
Delivering the ultimate in imaging performance, excellent functionality and proven reliability

Aloka's ProSound technology is widely recognized for its ability to provide optimum ultrasound imaging performance, making it ideal for EUS. When combined with Olympus' GF-UC140P-AL5 / GF-UCT140-AL5 endoscopes, the result is an EUS platform that delivers accurate, comprehensive imaging. Using a variety of state-of-the-art technologies such as Color Doppler, Aloka's ProSound system offers outstanding views of internal structures.

Features

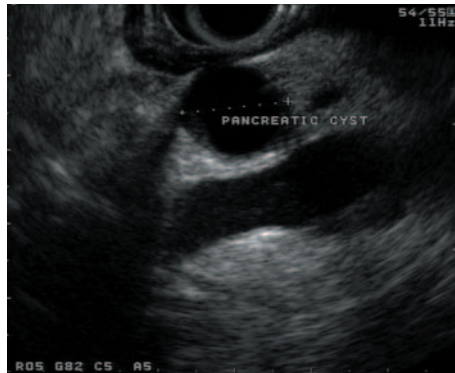
- Preeminent Imaging Performance**
- Quad-Frequency Imaging (4-Step Multi-Frequency Imaging)**
- Dual Dynamic Display (DDD)**
- Storage & Networking**
- DICOM Network**

**ALOKA DIAGNOSTIC
ULTRASOUND SYSTEM
ProSound α 5**

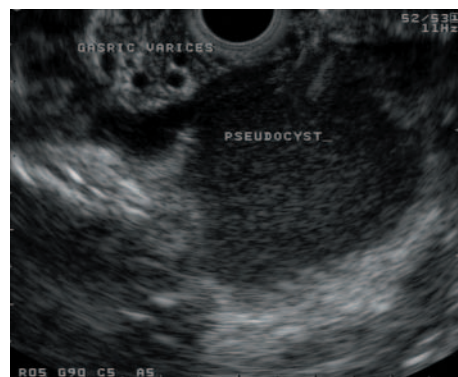
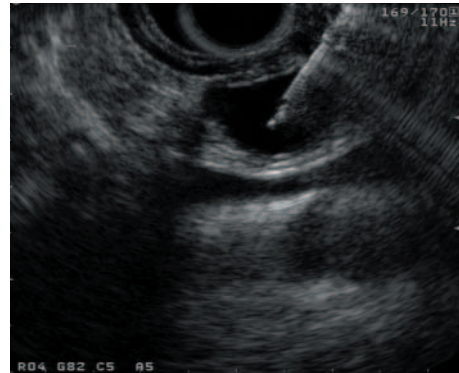


Sample Imaging Results

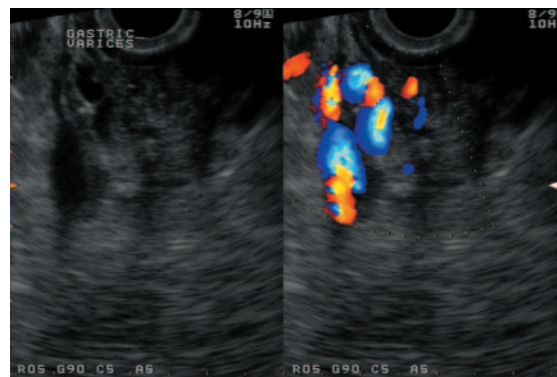
A Penetrating Solution for Tissue Diagnosis



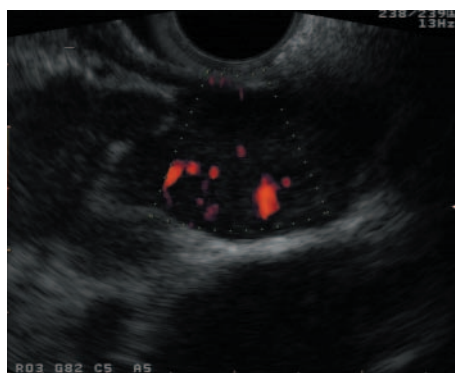
FNA for Pancreatic Cyst



Gastric Varices and Pancreatic Pseudo Cyst

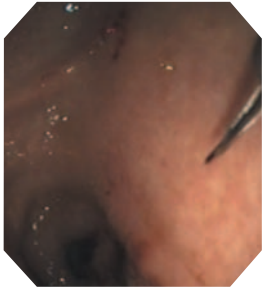


DDD (Dual Dynamic Display) of B Mode and Color Doppler Mode

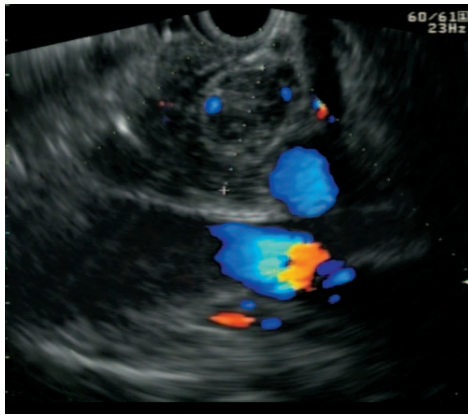


FNA for Subcarinal Nodes with Power Doppler Mode

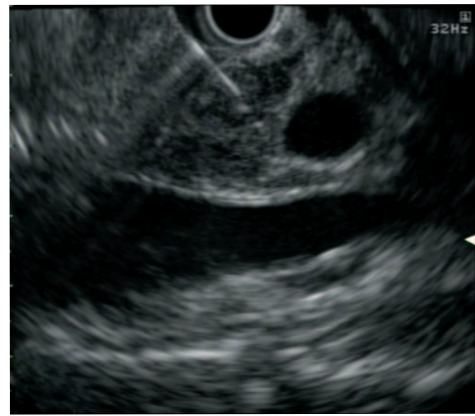




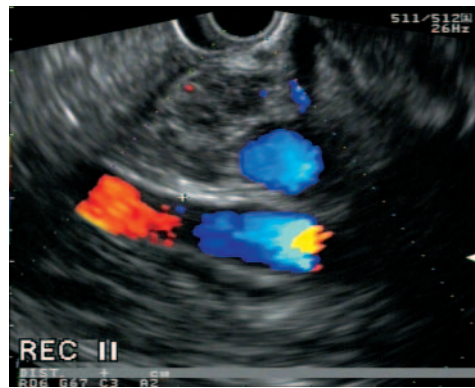
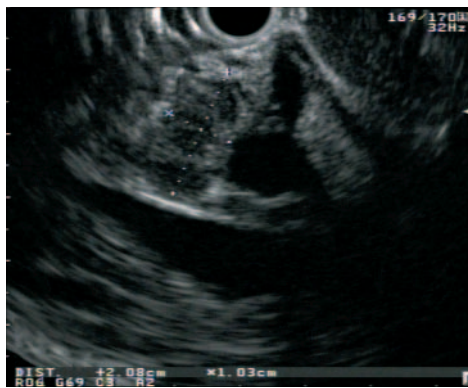
Drainage for Pancreatic Cyst



Color Doppler Mode



Gall Bladder Cancer

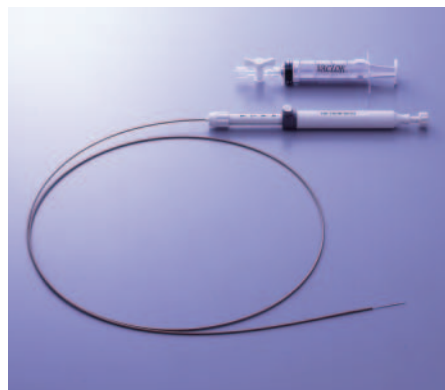


Color Doppler Mode



SINGLE USE ASPIRATION NEEDLE NA-200H-8022

Designed for use with all Olympus ultrasound endoscopes designed for EUS-guided FNA, the EZ Shot offers excellent puncture capabilities.



Features

- Preassembled and presterilized
- Convenient single-use design
- Everything you need in one package

- Including a 20 cm³ (20 ml) variable vacuum-locking syringe and stopcock

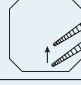
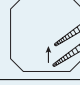
- Outstanding puncture capability
- Adjustable needle projection (0-8 cm)

- Excellent needle tip visibility

- Designed for use with all Olympus ultrasound endoscopes designed for EUS-guided FNA

EZ Shot

GF-UC140P-AL5, GF-UCT140-AL5/Specifications

		GF-UC140P-AL5	GF-UCT140-AL5	
Endoscopic Functions	Optical System	Field of View	100°	100°
		Direction of View	55° Forward Oblique	55° Forward Oblique
		Depth of Field	3 to 100 mm	3 to 100 mm
	Insertion Tube	Distal End Outer Diameter	14.2 mm	14.6 mm
		Insertion Tube Outer Diameter	11.8 mm	12.6 mm
		Working Length	1250 mm	1250 mm
		Channel Inner Diameter	2.8 mm	3.7 mm
	Instrument Channel	Minimum Visible Distance	6 mm	6 mm
		Direction from which ENDO-Therapy Accessories enter and exit the endoscopic image		
		Bending Section	Angulation Range	UP130°, DOWN90° RIGHT90°, LEFT90°
Total Length		1575 mm	1575 mm	
Ultrasonic Functions	Display Mode	B-mode, M-mode, D-mode, Flow-mode, Powerflow-mode		
	Scanning Method	Electrical Curved Linear Array		
	Scanning Direction	Parallel to the insertion direction		
	Frequency	5, 6, 7.5, 10 MHz		
	Focusing Point	Maximum 4 focusing points are available. (between F1 to F16)		
	Scanning Range	180°		
	Contacting Method	Balloon method Sterile Deaerated Water Immersion Method		

NA-200H-8022 Specifications

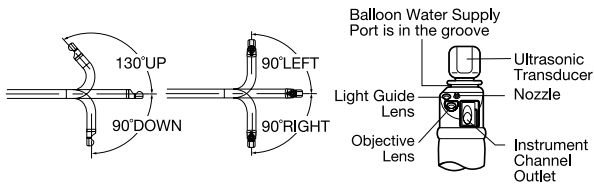
Maximum insertion portion diameter	1.85 mm	
Working length	1400 mm	
Needle width	22 G	
Needle length	80 mm	
Compatible Olympus ultrasound endoscopes	Model and working length	GF(1244-1265 mm)
	Channel Inner Diameter (Color Code)	2.8 mm (Yellow) 3.7 mm (Orange)
	Ultrasonic scanning direction	Parallel to insertion direction


	One-piece pack	Five-piece pack
Needle	1	5
Syringe	1	5
Stopcock	1	5

NA-11J-KB Specifications

Maximum insertion portion diameter	2.35 mm	
Working length	1450 mm	
Needle width	22 G	
Needle length	Manual: 60 mm Auto: 0-30 mm	
Function	Spring-assisted	
Type	Sheath slide type	
Compatible Olympus ultrasound endoscopes	Model and working length	GF(1244-1265 mm)
	Channel Inner Diameter (Color Code)	2.8 mm (Yellow) 3.7 mm (Orange)
	Ultrasonic scanning direction	Parallel to insertion direction

Contents	Needle Section	Sheath Section	Handle Section
NA-11J-KB Standard Set	Set of 5	Single	Single
MAJ-903	—	—	Single
MAJ-904	—	Single	—
MAJ-919	Set of 5	—	—



 Any product in our brochures that features this is part of the lineup of Olympus fine-needle aspiration biopsy products.

Specifications, design and accessories are subject to change without any notice or obligation on the part of the manufacturer.

OLYMPUS

OLYMPUS MEDICAL SYSTEMS CORP.
Shinjuku Monolith, 3-1 Nishi-Shinjuku 2-chome, Shinjuku-ku, Tokyo 163-0914, Japan
OLYMPUS MEDICAL SYSTEMS EUROPA GMBH
Postfach 10 49 08, 20034 Hamburg / Wendenstrasse 14-18, 20097 Hamburg, Germany
OLYMPUS AMERICA INC.
3500 Corporate Parkway, P.O. Box 610, Center Valley, PA18034-0610, U.S.A.
OLYMPUS LATIN AMERICA, INC.
5301 Blue Lagoon Drive, Suite 290 Miami, Florida 33126-2097, U.S.A.
KEYMED LTD.
Keymed House, Stock Road, Southend-on-Sea, Essex SS2 5QH, England

OLYMPUS SINGAPORE PTE LTD.
491B River Valley Road #12-01/04, Valley Point Office Tower, Singapore 248373
OLYMPUS HONG KONG AND CHINA LIMITED
Room 1520-1527, Ocean Centre, 5 Canton Road, Tsimshatsui, Kowloon, Hong Kong
OLYMPUS (BEIJING) SALES & SERVICE CO., LTD.
Room.1202, NCI Tower, A12 Jianguomenwai Avenue Chaoyang District Beijing, 100022, China
OLYMPUS MOSCOW LIMITED LIABILITY COMPANY
117071, Moscow, Malaya Kaluzhskaya 19, bld. 1, fl.2, Russia
OLYMPUS AUSTRALIA PTY LTD
31 Gilby Road, Mount Waverley, VIC., 3149, Australia

www.olympus.com

Printed in Japan F1032SB-3-1205