

Case Report

ScopeGuide Helps to Navigate Colonoscope Through Difficult Colon

Author: Sergey V. Kantsevov, MD, PhD, FJGES

Director of Therapeutic Endoscopy at Mercy Medical Center, Baltimore, MD, USA

Case Presentation

A 54-year-old female was referred to our institution after an unsuccessful screening colonoscopy. The patient had a torturous, redundant colon with multiple fixed turns and the referring gastroenterologist could not reach ascending colon despite application of abdominal pressure and changing patient's position.

Case Management

We performed a colonoscopy using the ScopeGuide system. ScopeGuide allowed adequate assessment of the configuration of the colonoscope tip and shaft to eliminate excessive looping (Figure 1), to shorten redundant, long colon (Figure 2) and markedly facilitated navigation through colon. With ScopeGuide visual assistance, the cecum was reached in less than 2 minutes (Figure 3) and then the colonoscope was easily inserted into distal small bowel (Figure 4).

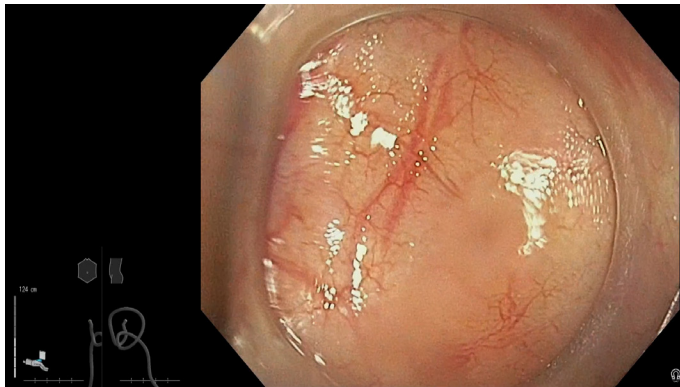


Figure 1

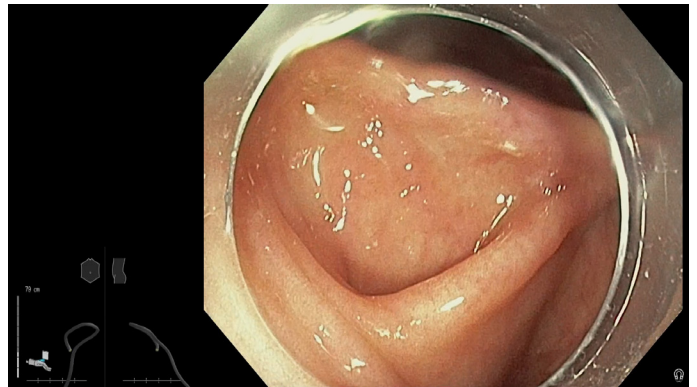


Figure 2

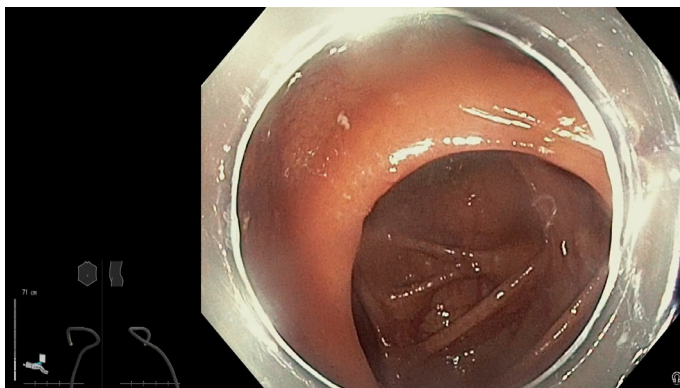


Figure 3

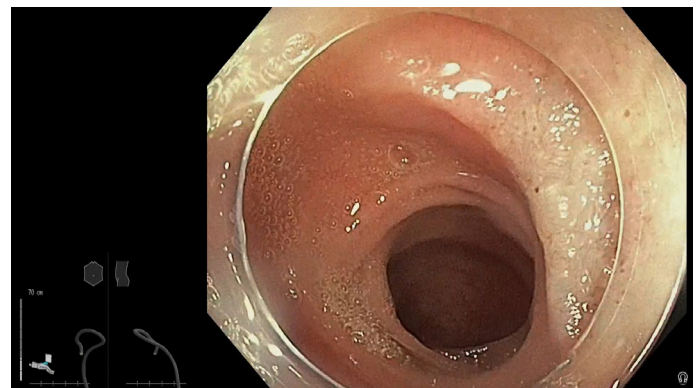


Figure 4

Case Report

ScopeGuide Helps to Navigate Colonoscope Through Difficult Colon

Author: Sergey V. Kantsevov, MD, PhD, FJGES

Director of Therapeutic Endoscopy at Mercy Medical Center, Baltimore, MD, USA

Case Management (Continued)

A very flat, 15 mm polyp was found in ascending colon on withdrawal of the colonoscope (Figure 5). The polyp was lifted with submucosal injection of normal saline and then resected en bloc with polypectomy snare (Figure 6). The patient was discharged home in a stable condition post procedure. Pathological examination revealed sessile serrated adenoma resected with negative margins (R0).



Figure 5

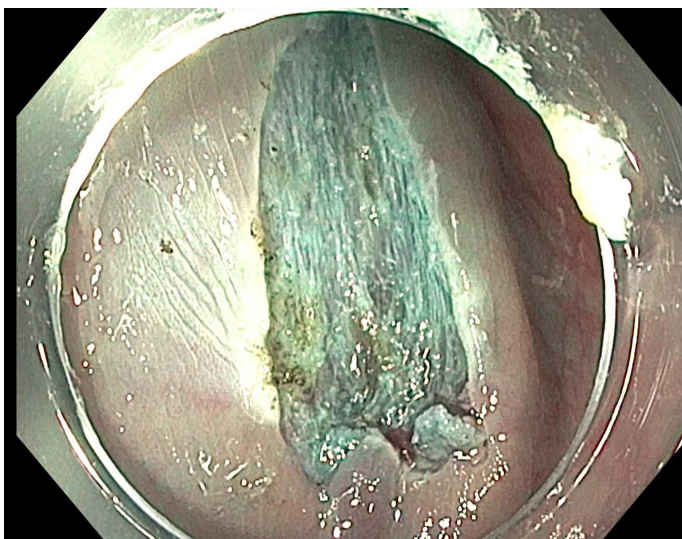


Figure 6

Conclusion

Colonoscopy can be very challenging in patients with torturous, redundant colon. ScopeGuide demonstrates in real time shape and position of colonoscope and eliminates the need for fluoroscopy with its associated cost and radiation exposure.

In our patient with a difficult and long colon, ScopeGuide assistance helped to eliminate excessive colonic looping, to straighten and to shorten the colon, markedly facilitating navigation of the colonoscope and decreasing the insertion time. ScopeGuide support enabled us to find and to remove a large precancerous colonic polyp preventing colon cancer in a patient with previous unsuccessful screening colonoscopy.

ScopeGuide Helps to Navigate Colonoscope Through Difficult Colon

<https://youtu.be/AyZpd5PY848>

Olympus is a registered trademark of Olympus Corporation, Olympus America Inc., and/or their affiliates. | Medical devices listed may not be available for sale in all countries.

OLYMPUS

OLYMPUS AMERICA INC.

3500 Corporate Parkway, PO Box 610, Center Valley, PA 18034

For more information, contact your Olympus sales representative or call 800-848-9024. www.medical.olympusamerica.com

©2020 Olympus America Inc. All rights reserved. Printed in the USA OAI0520WP35262